



**Sunsight™**

Alignment Solutions



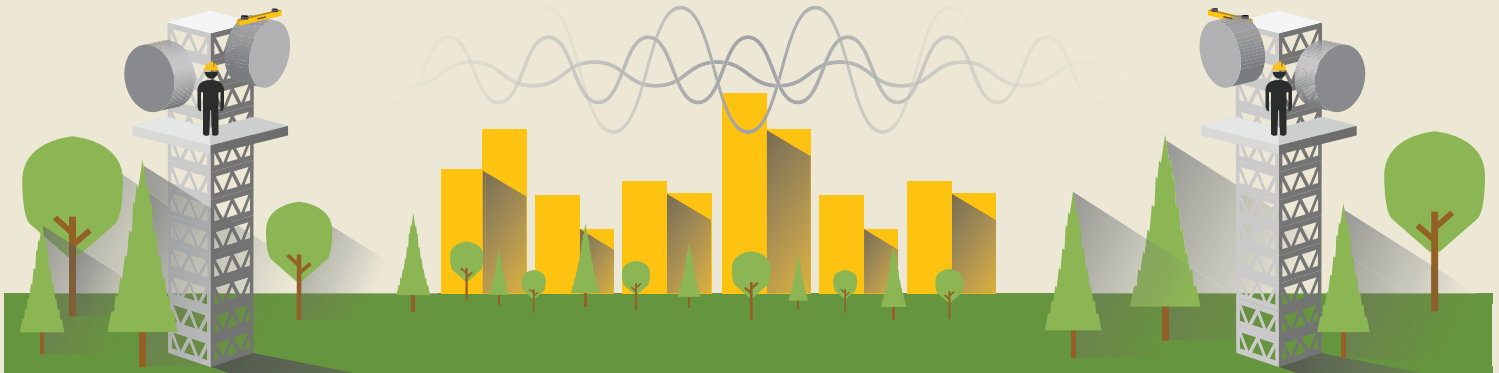
Tel: +1 (321) 244-9443

[sales@sunsight.com](mailto:sales@sunsight.com)

## **Sunsight Microwave Max Path Alignment Kit**

Real Time End-to-End Path Alignment System

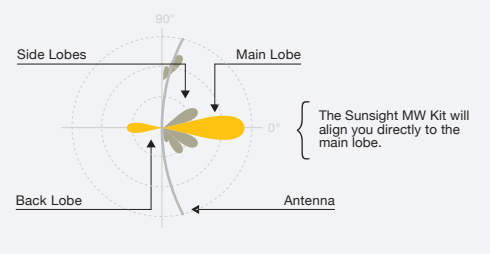
- ✓ Kit determines the required path alignment automatically, eliminating potential errors
- ✓ Frequency and distance independent, Link can be aligned with or without radios installed or powered
- ✓ Two alignment units allow for simultaneous alignment of both sides of a link in minutes
- ✓ Additional USB-C Cable interface allows MW use in RF interference environments
- ✓ Can also be used to align one end of the link at a time, eliminating the need for multiple crews
- ✓ Each unit can operate as a Directional (ex. Cellular panel antenna) alignment tool
- ✓ A new easy-to-use icon-based interface minimizes learning curves and language barriers
- ✓ 3-year warranty standard
- ✓ No annual maintenance or calibration requirement



The system automatically calculates exact alignment using known positional data in real-time and provides the user simple targets for aligning the link. No signal, power, or frequency is needed for Sunsight's innovative pathing process.

## Technical Specifications

Azimuth (Heading) Accuracy (degrees)	
RMS	+/- .08
R95	+/- .16
R99	+/- .32 degree
GPS Receiver Channels	1408
Satellite Constellations	GPS L1C/A/L2P (Y)/L2C BDS B1I/B2I/B3I, GLONASS G1/G2, Galileo E1/E5a/E5b, QZSS L1/L2
Tilt and Roll Range	+/- 22.5 degrees
Tilt and Roll Accuracy	.1 degree *
Horizontal Accuracy (ft)	1
Vertical Accuracy - MSL (ft)	3
Unit Dimensions	
Side	43 x 3 x 2.6"
Weight	6 lbs.
Battery:	
Type	LiFePo4
Life	10 hours
Charge Time	80 mins
Environment and Connectivity:	
Op Temp	-30 to +60 c
Storage Temp	-30 to +60 c
Humidity	95%
Communications	Wifi, USB-C
Output	PDF, CSV, Google Earth (KML)
Environmental	IP65



\*.1 degree accuracy from 0 to +/- 10 degrees, .2 degrees from +/-10.1 to +/-22.5 degrees

## What's Included

Part #	Description
MW Max Kit	Microwave Path Alignment (Includes 2 MW Max Units, 2 Universal Microwave Mounts, 2 Handheld Devices, 2 Smart Levels, 2 USB-C Cables, 2 Battery Chargers, and 2 Hard Cases)
MW Max Single Unit	Microwave Path Alignment (Includes MW Max Unit, Universal Microwave Mount, Handheld Device, Smart Level, USB-C Cable, Battery Charger, and Hard Case)

Flat Panel Antenna Mount For aligning Flat Panel Antennas (ie. Radwin 5000 JET Base Station)